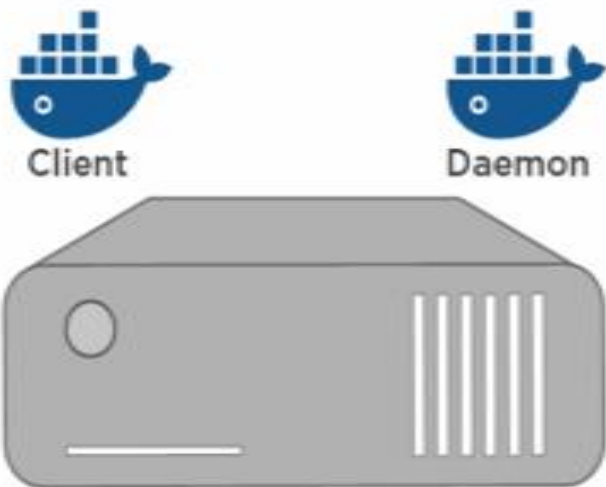


Container Life Cycle and Docker Architecture





Installing Docker gives you the **client** and **daemon**

```
$ docker run hello-world
```



Client

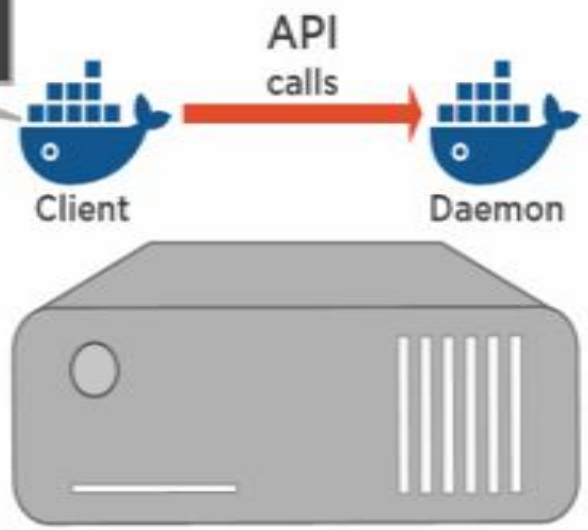


Daemon



Installing Docker gives you the **client** and **daemon**

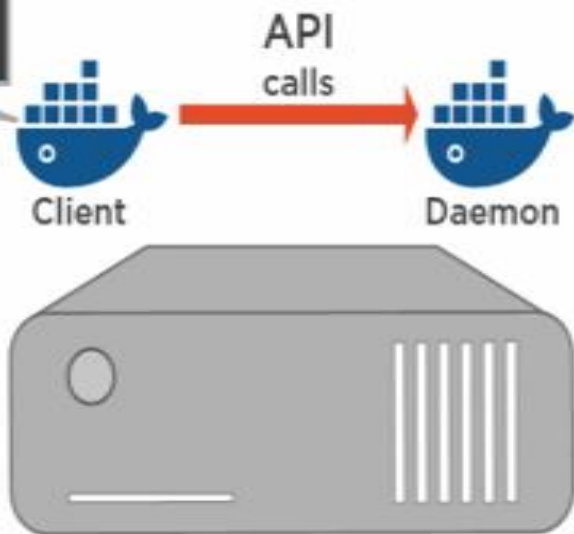
```
$ docker run hello-world
```



Installing Docker gives you the **client** and **daemon**

Client makes API calls to daemon

```
$ docker run hello-world
```

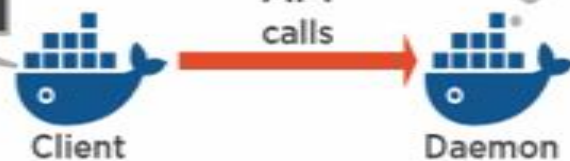


Installing Docker gives you the **client** and **daemon**

Client makes API calls to daemon

Daemon implements the *Docker Remote API*

```
$ docker run hello-world
```



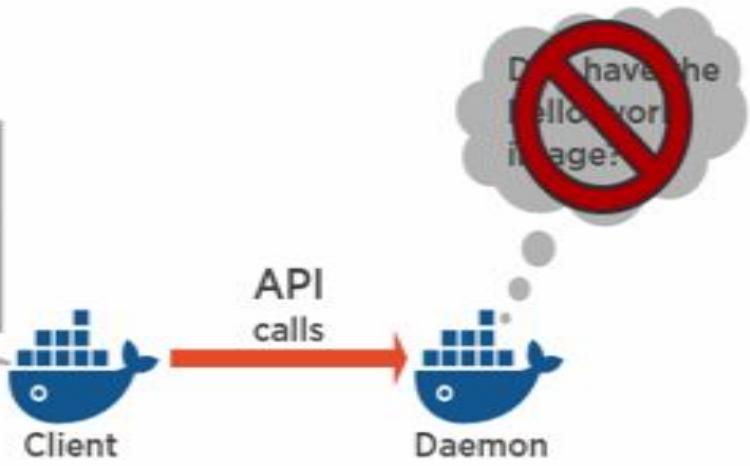
Installing Docker gives you the **client** and **daemon**

Client makes API calls to daemon

Daemon implements the *Docker Remote API*

`docker run` starts a new container

```
$ docker run hello-world
```



Docker Host local image store

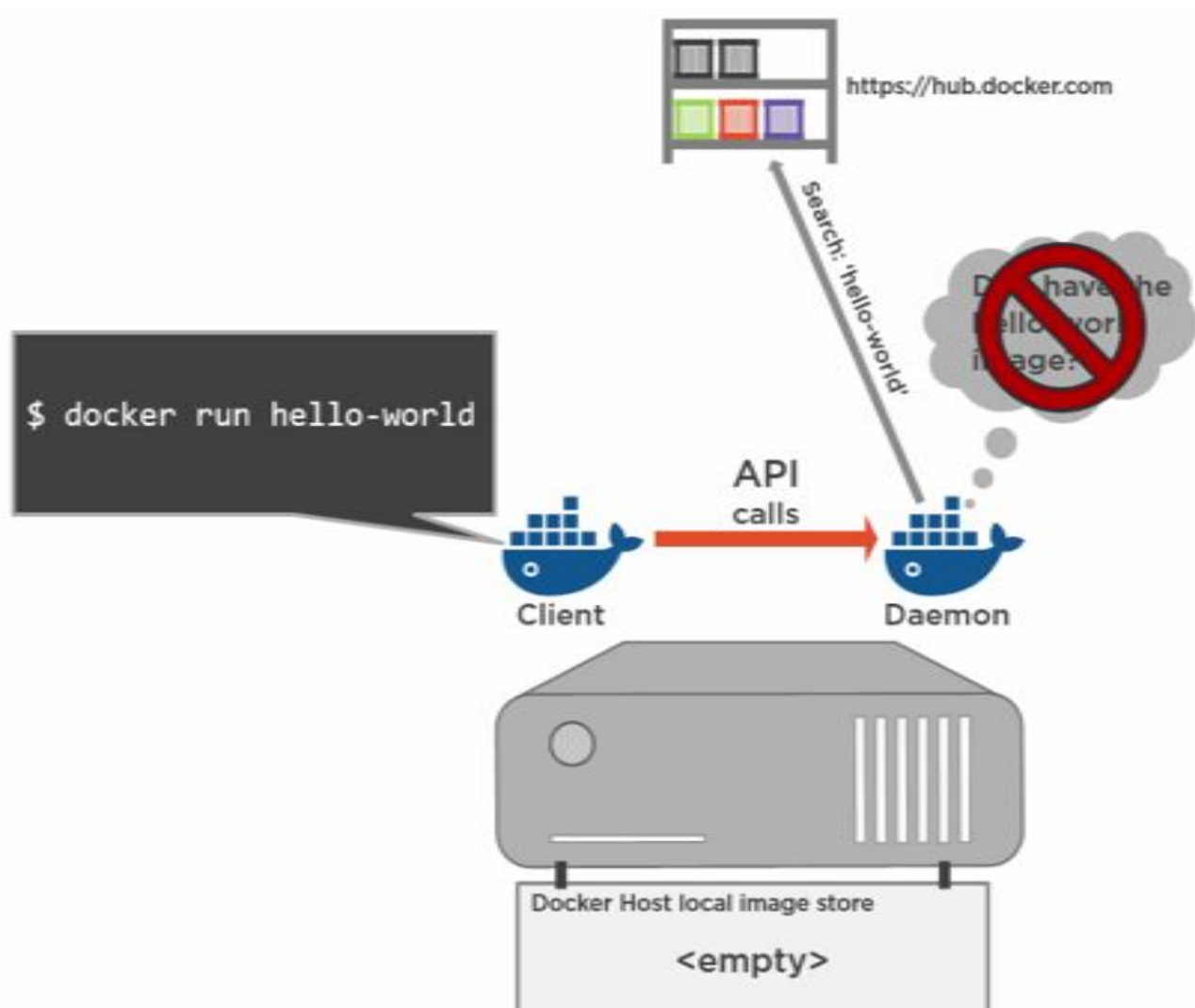
<empty>

Installing Docker gives you the **client** and **daemon**

Client makes API calls to daemon

Daemon implements the *Docker Remote API*

docker run starts a new container

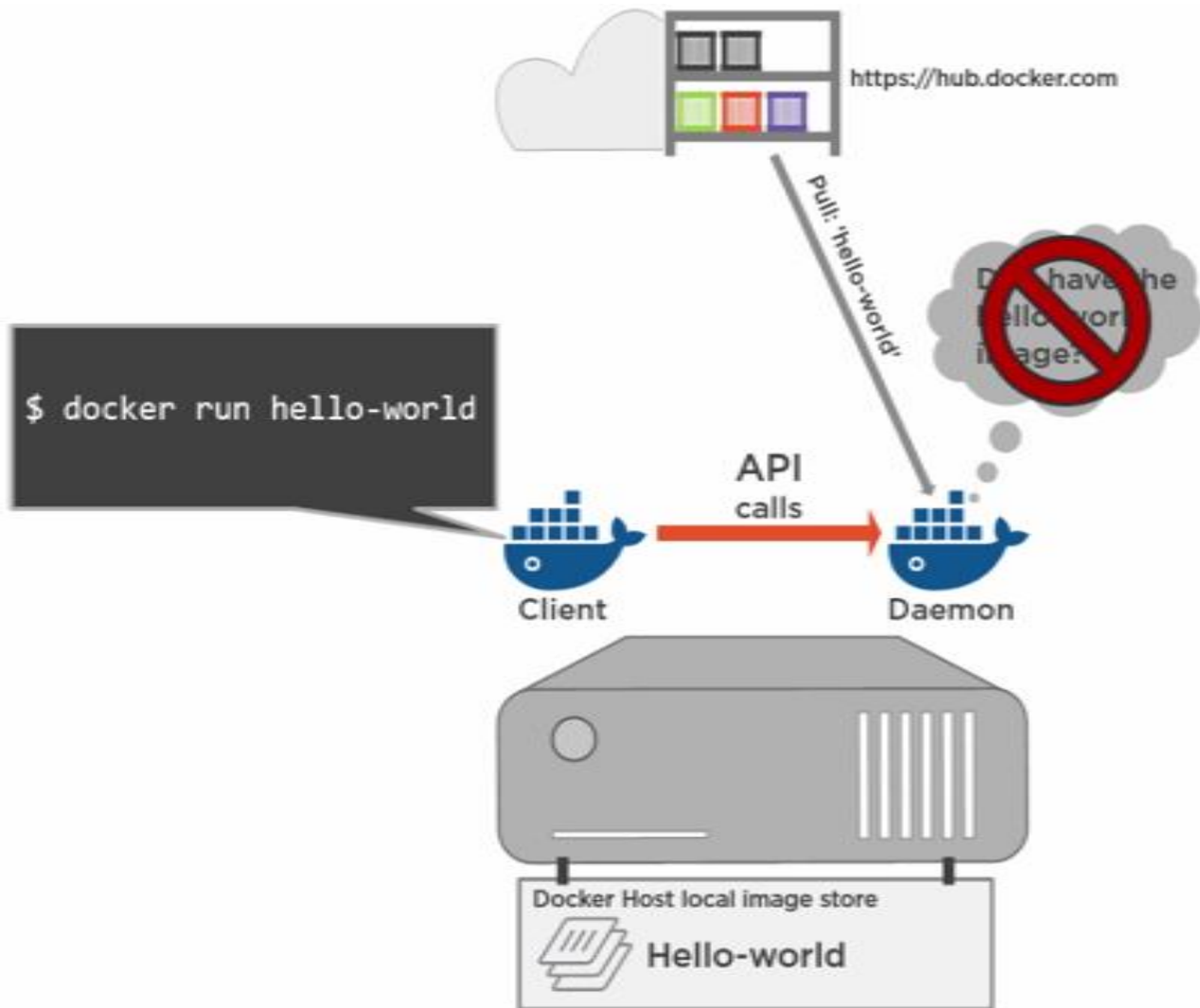


Installing Docker gives you the **client** and **daemon**

Client makes API calls to daemon

Daemon implements the *Docker Remote API*

`docker run` starts a new container



Installing Docker gives you the **client** and **daemon**

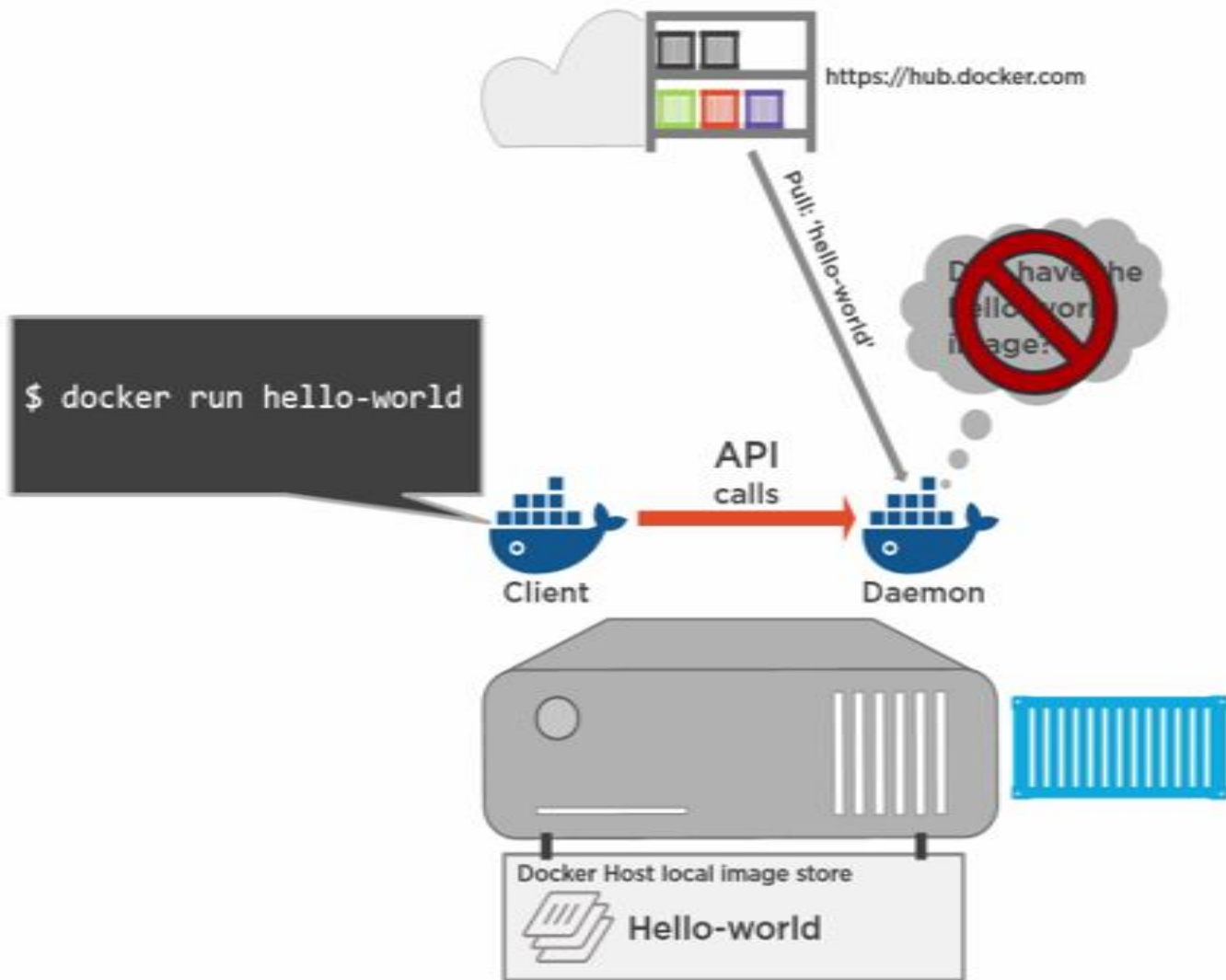
Client makes API calls to daemon

Daemon implements the *Docker Remote API*

`docker run` starts a new container

Docker Hub is the default public registry

The daemon will *pull* images that it doesn't already have



Installing Docker gives you the **client** and **daemon**

Client makes API calls to daemon

Daemon implements the *Docker Remote API*

`docker run` starts a new container

Docker Hub is the default public registry

The daemon will *pull* images that it doesn't already have

Container Life Cycle

RUNNING (UP)



`docker start <container>`

`docker stop <container>`

STOPPED
(EXITED)



Docker Architecture

